



Board of Directors Composition

Green shading - positions elected by membership - 3-year terms

Yellow shading - positions elected by current Board - 1-year terms

Chart shows which committees positions chair

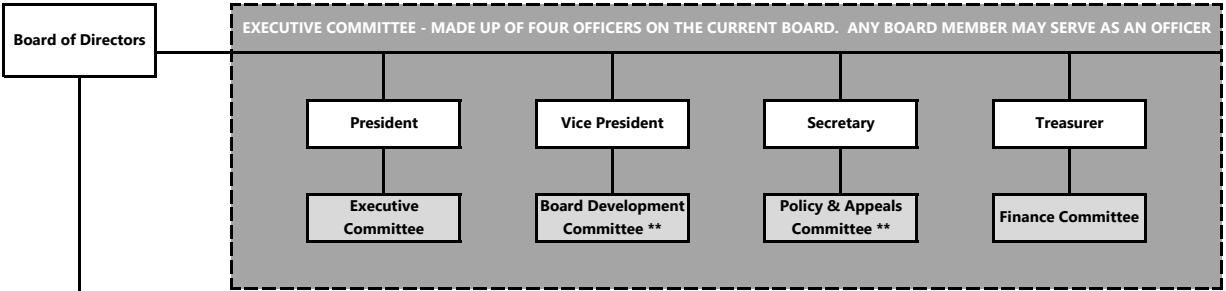
(Example - Adult Rep chairs the Adult Committee)

Dark gray shading - Executive Committee (comprised of four officers)

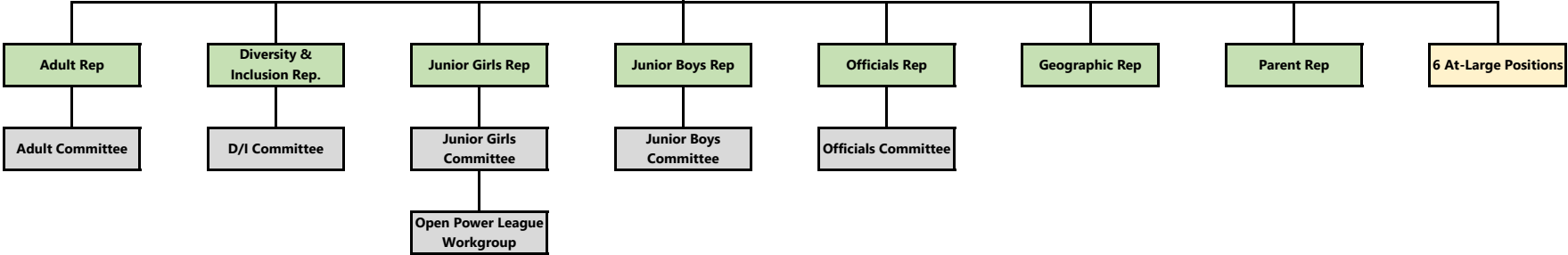
Board has 13 positions total

Four of the existing 13 members make up the Executive Committee

These are not separate positions held by separate individuals



**** Any Board member may chair the Board Development Committee and the Policy & Appeals Committee. If no suitable candidate is identified, the Vice President chairs the Board Development Committee, and the Secretary chairs the Policy & Appeals Committee.**





Staff Composition

Green - full time employees

Yellow - part time employees

Blue - independent contractors

